

H3

HOLLYWOOD

UNIT B3

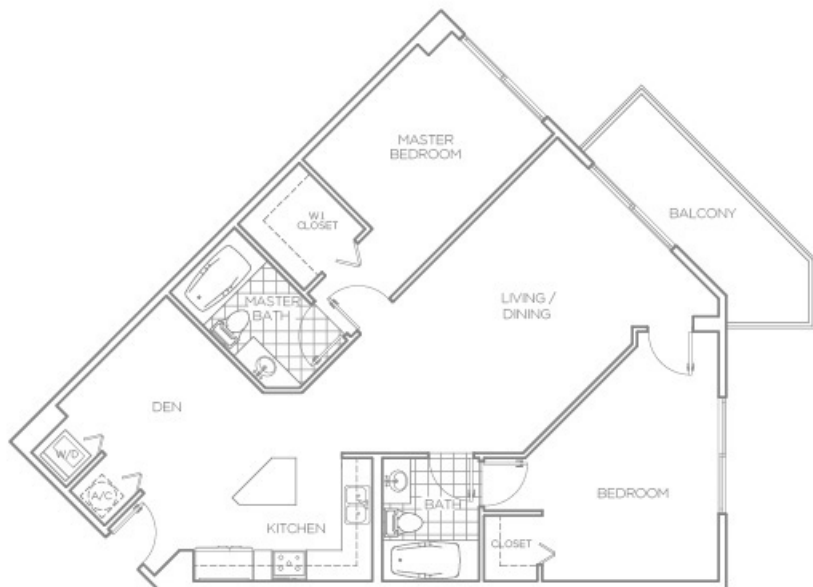
2 BEDROOM + DEN

2 BATH

UNDER A/C: 1165 SQ FT 108,20 M²

OUTDOOR: 109 SQ FT 10,15 M²

TOTAL: 1274 SQ FT 118,95 M²



ORAL REPRESENTATIONS CANNOT BE RELIED UPON AS CORRECTLY STATING REPRESENTATIONS OF THE DEVELOPER FOR CORRECT REPRESENTATIONS, MAKE REFERENCE TO THIS BROCHURE AND TO THE DOCUMENTS REQUIRED BY SECTION 716.009, FLORIDA STATUTES, TO BE FURNISHED BY THE DEVELOPER TO A BUYER. ALL DIMENSIONS ARE APPROXIMATE AND VARY DEPENDING ON METHOD OF MEASUREMENT. THE SQUARE FOOTAGE DEPICTED HEREIN IS APPROXIMATE AND MAY DIFFER BASED UPON DIFFERENT METHODS OF MEASUREMENT. PURCHASERS ARE URGED BEFORE SIGNING A CONTRACT TO PURCHASE TO CONFIRM FOR THEMSELVES THAT THE MEASUREMENTS AND SQUARE FOOTAGE OF THE UNITE THEY WISH TO PURCHASE MEETS THEIR SPECIFIC NEEDS AND EXPECTATIONS. THE ILLUSTRATION ABOVE IS NOT TO SCALE. THE BUYER IS RESPONSIBLE TO VERIFY SQUARE FOOTAGE.